

High-Pressure Apparatus for the Measurement of Electrical Resistance at Low Temperatures

E. M. COMPY

P. B. ALERS

The apparatus to be described in the paper resembles the Stewart-Swenson designs except that a silver chloride pressure medium is used instead of solid hydrogen. The major objection to this approach is the likelihood of high-pressure gradients and hysteresis in the medium, but these effects, while certainly present at low temperatures, have proven to be quite manageable. The equipment was designed for measurements of high-field magnetoresistance in bismuth, and its form was dictated largely by magnet and dewar geometries.

DESCRIPTION

A cross-section of the apparatus is shown in Fig. 1.

The shaded members are all Type 304 stainless steel, chosen because of its low thermal conductivity at low temperatures and because it retains a limited ductility when cold. A hydraulic ram at the top of the apparatus acts on a compression member which consists of a steel tube of $\frac{1}{8}$ in. wall thickness and $1\frac{1}{2}$ in. od. The bottom of this tube bears on the movable piston in the high-pressure cell. The cell is supported by a tension member, which is also a tube with $\frac{1}{8}$ -in. wall and 2 in. od. The overall length of the assembly, including the ram, is 49 in., and pressures of the order of 40 kilobars can be produced in the cell with ram pressures of 2000 psi. The pressure cell itself is shown in Fig. 2.

Its design contains many elements of the optical cell of Drickamer et al (6), without, of course, the windows. Successful runs have been made using a cell with carboloy pistons and an insert of Solar steel, but to avoid the problems of differential thermal contraction on cooling, a carboloy insert should be used. No attempt has been made to use nonmagnetic materials because the cell is intended to be used in solenoid magnets which deliver fields far in excess of the saturation fields of the cell components.

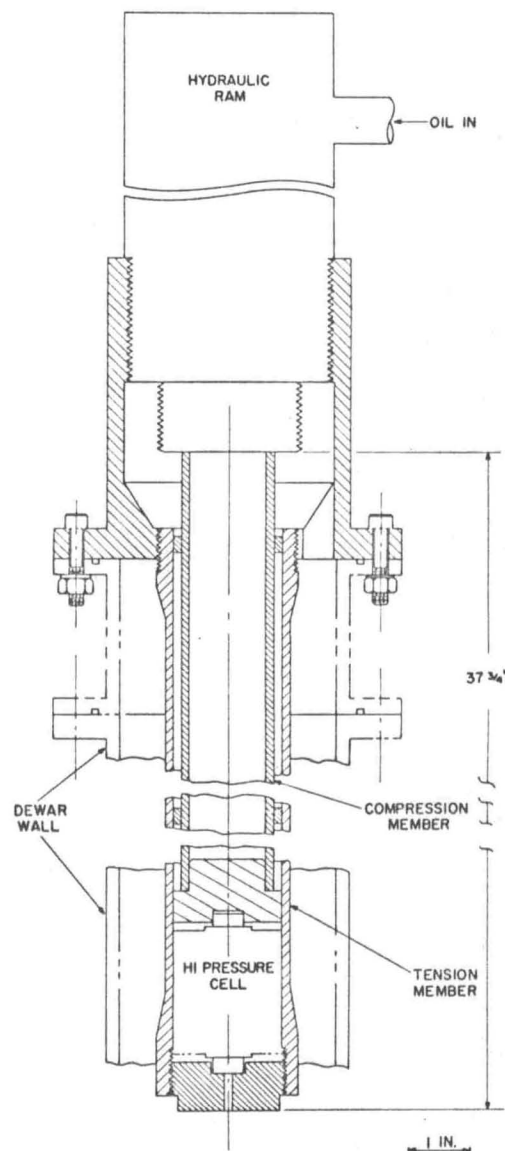


Fig. 1 Cross-section view of complete apparatus

The lower piston is stationary and is insulated from the body of the cell by a bakelite collar and a thin layer of silver chloride. From the top of this piston, a short gold wire is passed through a mica insulator and through a disk of AgCl to one end of the sample, Fig. 3.

The sample, a bar of bismuth, is placed horizontally in a preformed cavity in a second disk of AgCl; the disk is then located in the chamber so that the wire from below touches one end of the bar. A second wire is run from the other end of the bar through a third disk of AgCl to contact the face of the moving piston, which is electrically connected to the compression member of the press. In this way, when pressure is applied after assembly, tight packing, with good electrical contact, can be achieved without undue damage to the sample.